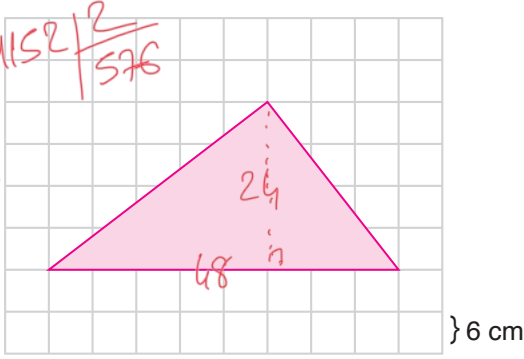


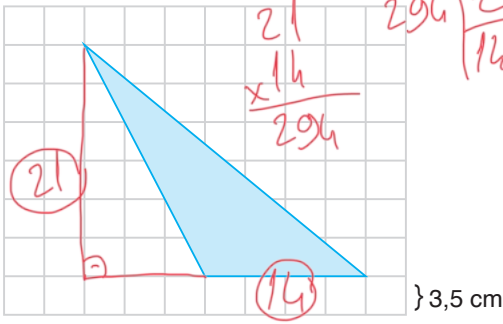
ÇÖZÜMLER

1.



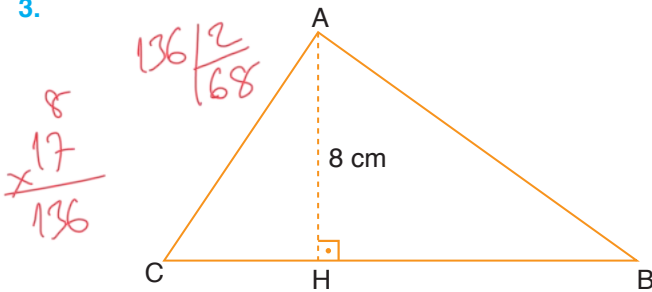
Yukarıdaki karesel zemine çizilmiş üçgenin alanı kaç cm^2 dir? 576 cm^2

2.



Yukarıdaki karesel zemine çizilmiş üçgenin alanı kaç cm^2 dir? 147 cm^2

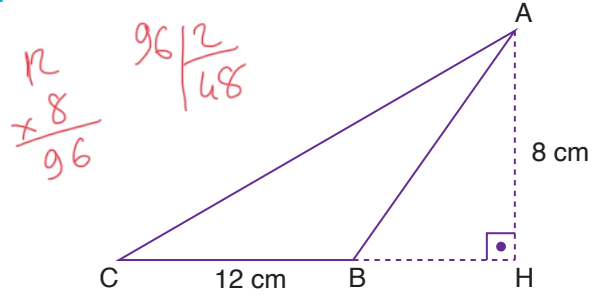
3.



IAHI = 8 cm, ICBI = 17 cm

Yukarıda verilenlere göre ABC üçgenin alanı kaç cm^2 dir? 68 cm^2

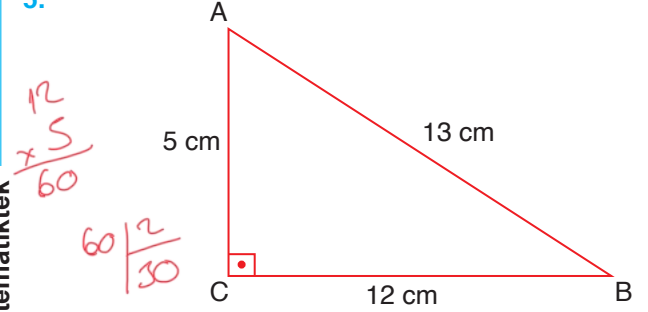
4.



IAHI = 8 cm, ICBI = 12 cm

Yukarıda verilenlere göre ABC üçgenin alanı kaç cm^2 dir? 48 cm^2

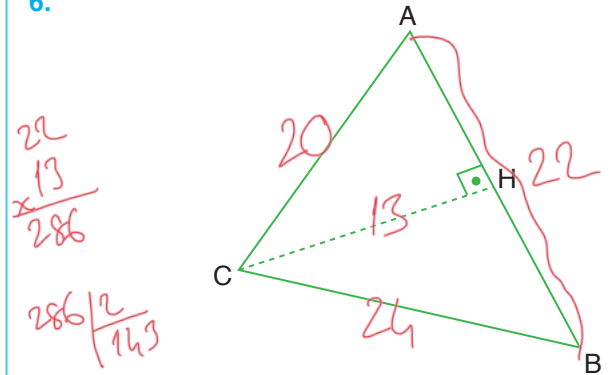
5.



IABI = 13 cm, ICBI = 12 cm, IACI = 5 cm

Yukarıda verilenlere göre ABC üçgenin alanı kaç cm^2 dir? 30 cm^2

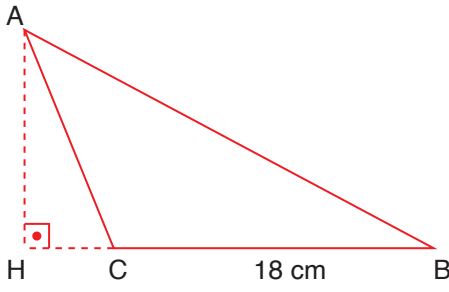
6.



IACI = 20 cm, IABI = 22 cm, IBCI = 24 cm, ICHI = 13 cm

Yukarıda verilenlere göre ABC üçgenin alanı kaç cm^2 dir? 143 cm^2

7.



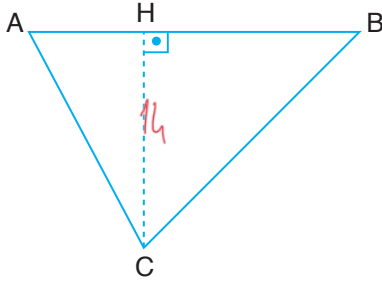
$$ICBI = 18 \text{ cm}, A(\widehat{ABC}) = 135 \text{ cm}^2$$

Yukarıda verilene göre IAHI kaç cm dir?

15cm

$$\begin{array}{r} 135 \\ \times 2 \\ \hline 270 \\ 270 \overline{) 18} \\ \underline{15} \end{array}$$

8.



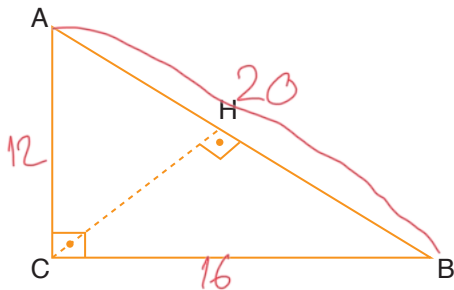
$$ICHI = 14 \text{ cm}, A(\widehat{ABC}) = 168 \text{ cm}^2$$

Yukarıda verilene göre IABI kaç cm dir?

26cm

$$\begin{array}{r} 168 \\ \times 2 \\ \hline 336 \\ 336 \overline{) 14} \\ \underline{24} \end{array}$$

9.



$$IACI = 12 \text{ cm}, ICBI = 16 \text{ cm}, IABI = 20 \text{ cm}$$

Yukarıda verilene göre ICHI kaç cm dir?

$$\frac{12 \cdot 16}{2} = \frac{20 \cdot ?}{2}$$

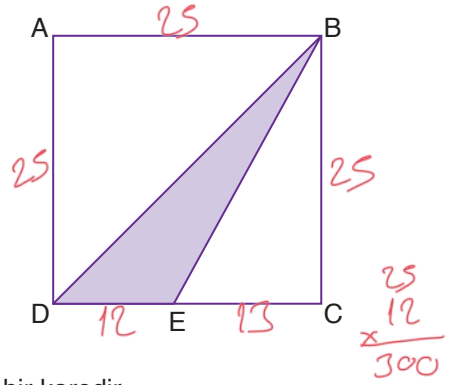
$$\begin{array}{r} 192 \overline{) 20} \\ \underline{196} \end{array}$$

Cevap anahtarı ve çözüm videosu için

www.matematiktek.com

$$192 = 20 \cdot ?$$

10.



ABCD bir karedir.

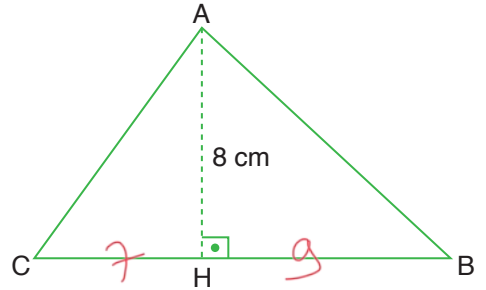
$$IABI = 25 \text{ cm}, IEI = 13 \text{ cm}$$

Yukarıda verilene göre BED üçgeninin alanı kaç cm² dir?

150cm²

$$\begin{array}{r} 25 \\ \times 12 \\ \hline 300 \\ 300 \overline{) 2} \\ \underline{150} \end{array}$$

11.

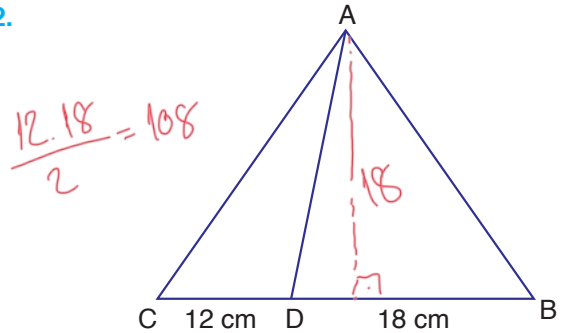


$$IAHI = 8 \text{ cm}, ICBI = 16 \text{ cm}, A(\widehat{AHC}) = 28 \text{ cm}^2$$

Yukarıda verilene göre AHB üçgeninin alanı kaç cm² dir?

36cm²

12.



$$ICDI = 12 \text{ cm}, IDBI = 18 \text{ cm}, A(\widehat{ABD}) = 162 \text{ cm}^2$$

Yukarıda verilene göre ACD üçgeninin alanı kaç cm² dir?

108cm²

$$\frac{12 \cdot 18}{2} = 108$$